



RECP #: 752774

RECORDED 5/8/2019 AT 1:16 PM BK# 2620 PG# 1816  
Debra K. Lee, CLERK OF LARAMIE COUNTY, WY PAGE 1 OF 1

# STATE OF WYOMING CORNER RECORD

(In compliance with the CORNER PERPETUATION AND FILING ACT, Wyoming Statutes, 1997 Section 33-29-140, et. seq., and the Rules and Regulations of the Board of Registrations for Professional Engineers and Professional Land Surveyors)

## SOUTH QUARTER CORNER SECTION 12, T. 18 N., R. 62 W., 6TH P.M., LARAMIE COUNTY, WYOMING

GLO: SET A FLINT STONE 16X12X5, 10IN DEEP, MARKED 1/4 ON N. SIDE FOR 1/4 SEC. COR.

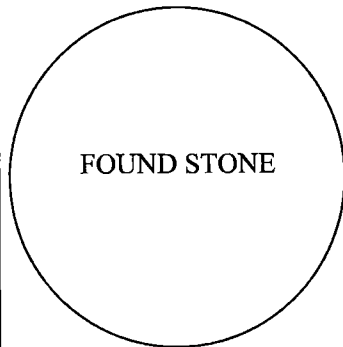
FOUND: STONE ON SOUTH SIDE OF NORTH AND WEST FENCE CORNER, STONE IS ROUGH AND JAGGED, NO MARKINGS FOUND, STONE WAS NOT SET.



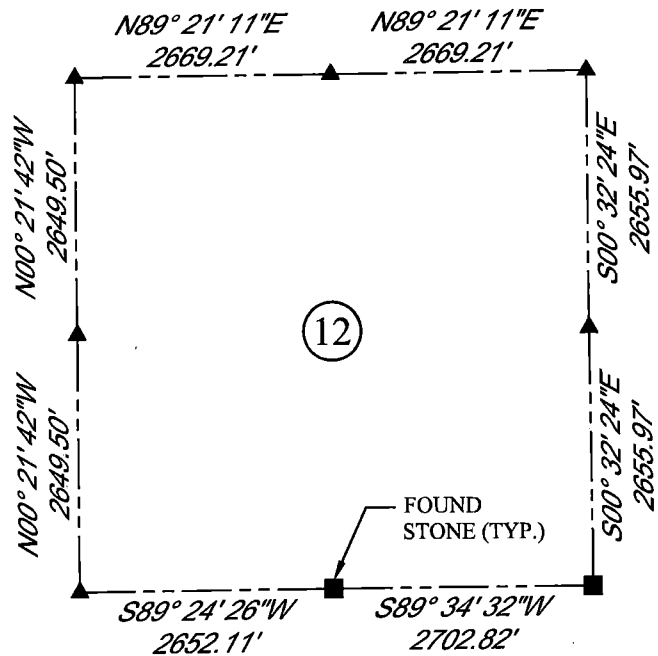
SCALE: NONE  
NORTH DETERMINED BY  
G.P.S OBSERVATIONS

FOUND: STONE NOT SET

SET: NOTHING



FOUND STONE



### LEGEND:

- FOUND BLM CAP
- ⊕ FOUND USFS CAP
- FOUND STONE
- FOUND PRIVATE MONUMENT
- ◆ CALCULATED POSITION
- ▲ SET MONUMENT (LS10245)
- SECTION LINE

DATE OF FIELD WORK: 7/19/2018 OFFICE REFERENCE: MERIDEN

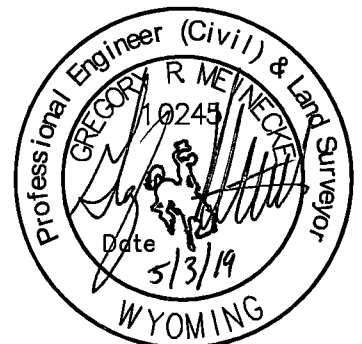
### CROSS INDEX DIAGRAM

	1	2	3	4	5	6	7	8	9	10	11	12	13	14	15	16	17	18	19	20	21	22	23	24	25
A																									
B																									
C		6			5			4			3			2			1								
D																									
E																									
F																									
G		7			8			9			10			11			12								
H																									
J																									
K																									
L		18			17			16			15			14			13								
M																									
N																									
O																									
P		19			20			21			22			23			24								
Q																									
R																									
S																									
T		30			29			28			27			26			25								
U																									
V																									
W																									
X		31			32			33			34			35			36								
Y																									
Z																									

WOOD  
2615 AVIATION DRIVE  
SHERIDAN, WY 82801  
PH: 307-675-6400

# wood.

THIS CORNER RECORD WAS  
PREPARED BY ME OR UNDER  
MY DIRECTION AND  
SUPERVISION,  
SEAL AND SIGNATURE



CORNER NAME: SOUTH QUARTER SECTION: 12 T. 18 N., R. 62 W. ; 6TH P.M. CROSS-INDEX # J-23  
SBRPELS/PLSW: MARCH 1994; PLSW JANUARY 1998